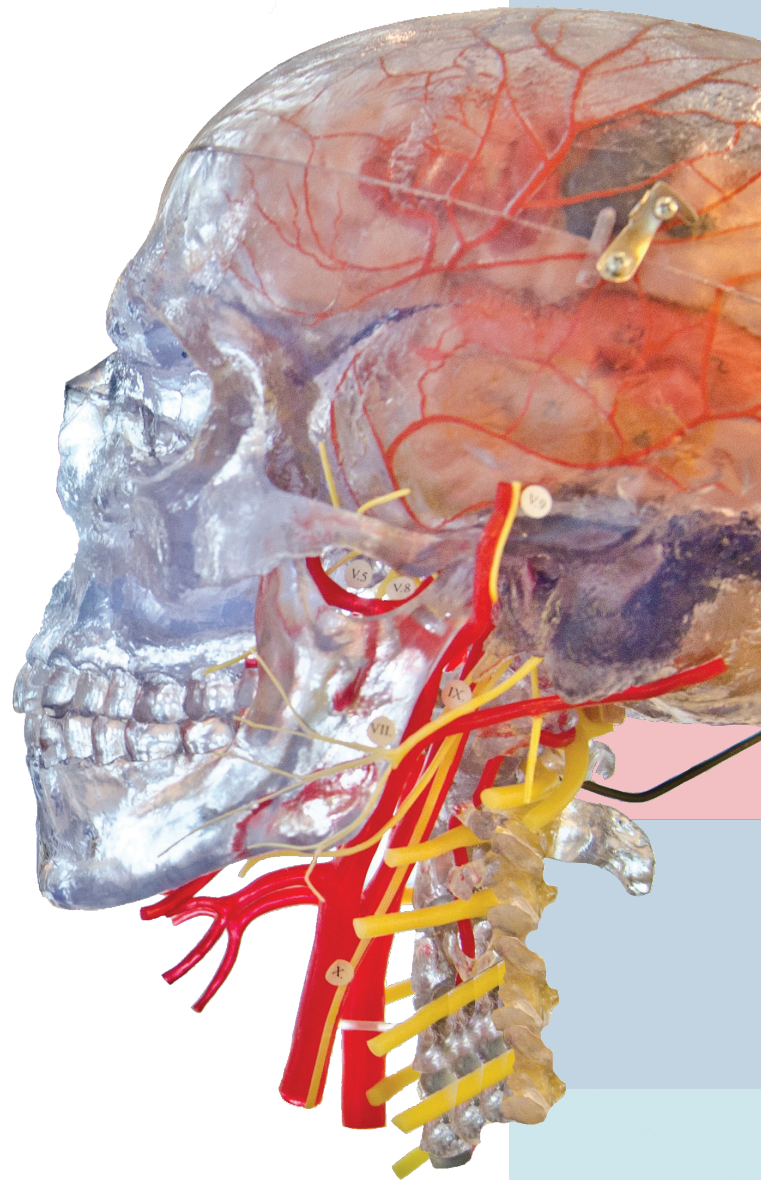


FINDING THE RIGHT MEDICAL EXPERT...

BEGINS WITH A COURTESY, IN-DEPTH TELEPHONE ANALYSIS AND THE SECURITY OF A COST-CONTROL GUARANTEE.

- Free initial telephone case analysis with our director
- Most experts are current or former department chiefs and/or medical school faculty
- Approximately 180 medical and related specialties
- Cost-control guarantee
- 15,000-plus cases since 1992
- Prompt, personalized, detailed service



MEDILEX

Medical Malpractice • Pain & Suffering • Wrongful Death • Burns
Excessive Force • DUI • Child Abuse • STD • Criminal • Mold • Lead Exposure
Medicine | Surgery | Psychiatry | Toxicology | Podiatry | Dentistry | Biomechanics

www.medilexinc.com

(212) 234-1999



MEDILEX

Medical Malpractice • Pain & Suffering • Wrongful Death • Burns
Excessive Force • DUI • Child Abuse • STD • Criminal • Mold • Lead Exposure
Medicine | Surgery | Psychiatry | Toxicology | Podiatry | Dentistry | Biomechanics

Since its founding in 1992 by an internist/geriatrician, a cardiologist, and an attorney, Medilex has been dedicated to providing high-quality, yet cost-effective, medical and related field expertise to plaintiff and defense counsel.

- **Free Initial Telephone Consultation:** A no obligation telephone case analysis with our director, who has spent the past 28 years analyzing more than 15,000 complex medical-legal cases spanning approximately 180 medical specialties.
- **Cost Control Guarantee:** If our expert's initial review and verbal report will exceed two hours, the attorney will be provided with a written commitment of the exact balance *and* given an option to decline to proceed.
- **Highly Qualified Experts:** Medilex experts range from well-published academicians to private practitioners. Most are current or former department chiefs and/or medical school faculty.
- **Full Scope:** From record review and consultation, through written reports, to expert testimony.

Call Medilex for a free, no obligation case analysis.

Addiction Psychiatry	Family Medicine - Aesthetic Medicine	Neurotology	Pediatrics
AIDS/HIV	Food Microbiology	Nuclear Cardiology	Perinatology
Allergy/Immunology	Foot & Ankle Orthopaedic Surgery	Nursing	Periodontics
Ambulatory Care Medicine	Forensic Pathology	Nursing Home Medicine	Pharmacology
Anesthesiology	Forensic Psychiatry	Nutrition Medicine	Pharmacy
Anthropometry	Gastroenterology	Obstetric Anesthesiology	Physical Therapy
Audiology	General Surgery	Obstetrics	Placental Pathology
Autism	(Medical) Genetics	Occupational Medicine	Plastic Surgery
Bariatric Surgery	Geriatric Medicine	Ocular Immunology	Podiatric Medicine
Biomechanics	Geriatric Neurology/Memory Disorders	Ocular Trauma	Podiatric Surgery
Blood Banking	Gynecologic Oncology	Oculoplastic Surgery	Podiatric Trauma
Breast Surgery	Gynecology	Oncology	Prison Medicine
Burn Medicine & Surgery	Hand Surgery	Ophthalmology	Prison Psychiatry
Cardiac Anesthesiology	Head & Neck Surgery	Oral & Maxillofacial Surgery	Psychiatry
Cardiac Electrophysiology	Heart Failure Cardiology	Orthopaedic Surgery	Psychology
Cardiac Transplant Medicine	Hematology	Orthopaedic Spine Surgery	Psychopharmacology
Cardiac Transplant Surgery	Hepatobiliary Surgery	Orthopaedic Trauma	Pulmonology
Cardiology	Hepatology	Otolaryngology	Radiation Oncology
Cardiothoracic Trauma	Hospital Administration	Otology	Radiology
Cardiovascular Surgery	Hospital Security	Pain Medicine	Renal Pathology
Chemistry	Hospitalist Medicine	Pathology	Reproductive Endocrinology
Child Abuse/Neglect Pediatrics	Hyperbaric Medicine	Pediatric Allergy & Immunology	Reproductive Toxicology
Child Psychiatry	Infectious Diseases	Pediatric Anesthesiology	Retina-Vitreous Ophthalmology
Colon-Rectal Surgery	Informatics	Pediatric Burn Medicine/Surgery	Rheumatology
Cosmetic Dentistry	Internal Medicine	Pediatric Cardiac Critical Care	Risk Management
Craniofacial Surgery	Interventional Cardiology	Pediatric Critical Care Medicine	Robotic Gynecologic Surgery
(Hospital) Credentialing	Interventional Neuroradiology	Pediatric Emergency Medicine	Robotic Urologic Surgery
Critical Care Medicine	Interventional Radiology	Pediatric Endocrinology	Social Work
Cytopathology	Laboratory Medicine	Pediatric Gastroenterology	STD (STI)
Dentistry	Lead Exposure	Pediatric Hematology	Substance Abuse
Dermatology	Long-Term Care	Pediatric Interventional Cardiology	Surgical Critical Care
Dialysis Nursing	Maternal-Fetal Medicine (High-Risk OB)	Pediatric Infectious Diseases	Surgical Oncology
Dietary Services	Maternal-Fetal Pathology	Pediatric Neurology	Telemedicine
Echocardiography	Medical Physics	Pediatric Neurotology	Thoracic Surgery
Emergency Medicine	Microbiology	Pediatric Oncology	Toxicology
Emergency Medicine - EMS	Mold	Pediatric Ophthalmology	Transplant Cardiology
Emergency Nursing	Neonatal Nursing	Pediatric Orthopaedic Surgery	Transplant Hepatology
Emergency Psychiatry	Neonatology	Pediatric Otolaryngology	Transplant Surgery
EMT/Paramedicine	Nephrology	Pediatric Otolaryngology	Trauma (Surgery)
Endocrine Surgery	Neurointervention	Pediatric Otology	Urgent Care Medicine
Endocrinology	Neurology	Pediatric Pathology	Urogynecology
Endodontics	Neuro-Ophthalmology	Pediatric Plastic Surgery	Urology
Environmental Medicine	Neuropsychology	Pediatric Pulmonology	Vascular Medicine
Ergonomics	Neuroradiology	Pediatric Rheumatology	Vascular (Stroke) Neurology
Family Medicine	Neurosurgery	Pediatric Surgery	Vascular Surgery
		Pediatric Urology	Veterinary Medicine